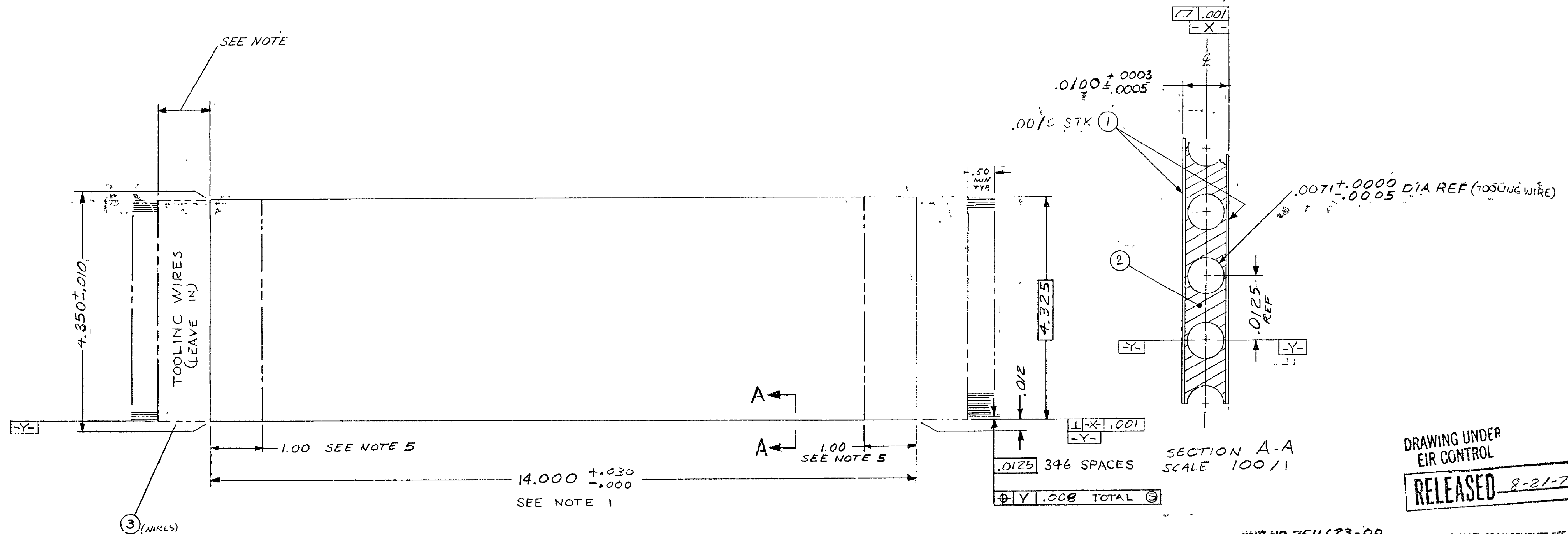


NOTE

1. TUNNEL DIMENSION SHOWN IS FINISHED DIMENSION. EXCESS MATERIAL SHOULD EXTEND .750 TO 1.250 EACH END BEYOND 14.000 DIMENSION SHOWN TO ALLOW TRIMMING AFTER TOOLING WIRES ARE REMOVED.
2. .002 MIN - .003 MAX SPACING BETWEEN TOOLING WIRES THROUGHOUT INTERNAL TUNNEL STRUCTURE.
3. SNAKING OF TOOLING WIRES NOT TO EXCEED .002 PER RUNNING INCH.
4. ETCH BOTH ENDS OF TOOLING WIRES UNTIL ENDS ARE FREE OF BURRS.
5. TRUE POSITION TOLERANCE OF CENTER LINES OF TUNNELS WITH RESPECT TO -Y- APPLIES ONLY IN 1.00 INCH ZONES AS SHOWN. THESE AREAS MUST BE IDENTIFIED.
6. TOOLING WIRES SHALL BE CAPABLE OF BEING PULLED OUT WITHOUT BREAKING AND WITHOUT DAMAGING THE TUNNEL.
7. ANY RELEASE AGENT USED SHALL CONTAIN NO SILICONES AND SHALL NOT BE CORROSIVE TO THE NICKEL-IRON PLATED BERYLLIUM-COPPER MEMORY WIRE.
8. WORKMANSHIP PER MANUFACTURING STANDARDS, PLATED WIRE MEMORIES 605-5

REVISIONS						
ZONE	LIK	EIK	DESCRIPTION	CHK	DATE	APPROVED
1	A	26941-29	DELETED (C) .031 ± .003 ± .100 1.3400 ± .005 ± .062 ± CL OF LAST COMPLETE TUNNEL ADD THESE AREAS MUST BE IDENTIFIED TO NOTE 5 SHOW WIRES IN MAIN VIEW ADDED NOTE 5	CH	10/27/70	REP
1	B	26941-158	FROM .0085 ± .0005 TO .0100 ± .0005 SECT AA ADDED REF TO .001 DIA. FIN. ADD .001 STK CHO TRV POS 1004 TO 008	CH	5/29/71	REP



DRAWING UNDER
EIR CONTROL
RELEASED 8-21-70

PART NO. 7511623-00
IDENT NO.

FOR MATL REQUIREMENTS SEE L/M,
L/M REV LETTER CONTROLS DOCUMENT.

UNLESS OTHERWISE SPECIFIED DIMENSIONS IN INCHES TOL. ON 2 PLACE DECIMALS 3 PLACE DECIMALS ANGLES		LAYOUT J. ILLI	DATE 9-3-70	CLASS D	UNIVAC FEDERAL SYSTEMS DIVISION DIVISION OF SPERRY RAND CORPORATION
+ .010 ± .005 ± / - .010 ± .005 ± /		DRAFTSMAN D. HARMS	TITLE TUNNEL STRUCTURE	SIZE D	
HOLE DIA. TOL. 0 THRU .251 THRU .500 LARGER + .003 + .005 + .010 - .002 - .003 - .005		CHECKER D. J. [Signature]	ENGINEER R. J. [Signature]	APPROVAL [Signature]	CODE IDENT. NO. 00538
THREADS: EXT. CL 2A, INT CL 2B COMMODITY CODE		DWC NO. 7511623		SCALE 1/1	WEIGHT SHEET 1 OF 1

DO NOT SCALE THIS PRINT